

ENDLESS POOL OPTIONS

Customize Your Pool to Suit Your Lifestyle.

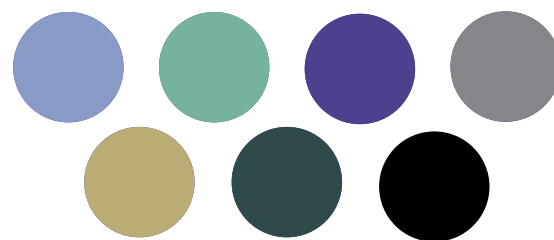
Endless Pools
1601 Dutton Mill Rd
Aston, PA 19014-2831
www.endlesspools.com
swim@endlesspools.com
800.732.8660 US
610.497.8676 Local
610.497.9328 Fax



Many of our customers choose to enhance their Endless Pool by selecting one or more of our available options. The following pages describe many of the options and how they can complement your pool and swim or exercise experience. Our team of architects and designers can be reached at 800-732-8660 to answer any questions you might have about incorporating these options into your pool.

Manual Retractable Security Cover

The Retractable Security Cover acts as a horizontal fence sealing off access to the pool. Indoors the cover controls humidity, while outdoors the cover seals out dirt, leaves and debris. The cover retracts onto a roller at one end of the pool and deploys along low-profile tracks installed on the pool coping. A lock-down mechanism is provided to secure the cover over the pool. The cover meets stringent ASTM F1346 safety standards and is strong enough to support the weight of an adult. The cover is available in light blue, aqua, royal blue, grey, tan, forest green and black. Sample color swatches are available. Covers for outdoor installations come equipped with a cover pump that automatically pumps rain water off the top of the cover. Endless Pools strongly recommends a security cover for all installations.



Manual Cover Color Choices

Size and Depth Options

When deciding upon a length and width for your pool, you should consider such factors as how you intend to use your pool, the general dimensions of the site, your own height, and additional space requirements for options such as jets, lights and a cover.

Wider Pools

Our standard pool is ideal for freestyle swimming but people who swim with a wide kick may benefit from a wider pool. Pools up to 3' wider are offered.

Longer Pools

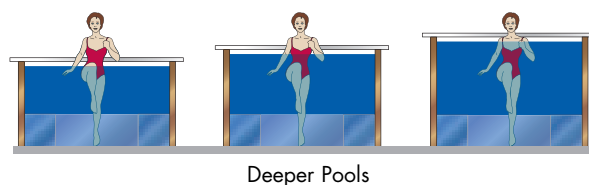
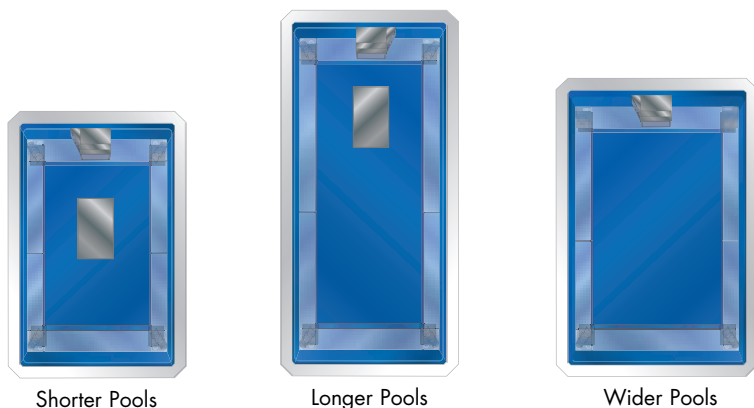
If you want to have more than one person using your pool at the same time, a longer pool is a good idea. We offer pools up to 2' longer.

Shorter Pools

Looking to install an Endless Pool into a tight space. A shorter pool may be the answer. One to two feet shorter pools offer the same quality current as our standard pools.

Deeper Pools

Our standard 42" high Endless Pool is ideal for swimming and seated water exercises on the perimeter benches. Our optional 48" pool can also accommodate many therapy and aquatic exercise routines, as can our deepest 54" unit. Remember taller pools stand higher in the room and ceiling height should be considered. We recommend a deeper pool if you are considering an underwater treadmill.



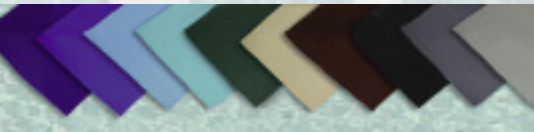
Below Deck Automatic Retractable Security Cover

Our Automatic Retractable Security Cover acts as a horizontal fence keeping children and pets out of the pool while controlling humidity. Operated with the turn of a key, the cover automatically retracts along concealed tracks below the pool deck for convenient access to your pool.

The cover meets stringent ASTM F1346 safety standards, in fact it's capable of supporting the weight of several adults. The cover can be installed with most coping systems. We strongly recommend a security cover for all installations that may be accessible to children, non-swimmers and pets.

Color Choices: Navy, Royal Blue, Light Blue, Turquoise, Green, Tan, Brown, Black, Charcoal, Gray

Outdoor models includes pump to remove rainwater.



Synthetic Coping

Our Synthetic Coping offers an attractive, cost-effective, durable and convenient method to finish the top edge of your Endless Pool. The 9.75" x 1" thick polymer-resin material is impervious to water and mildew. It needs little maintenance and never requires refinishing. Plus, it comes in several colors to complement any decor. At the front of the pool our coping system extends an extra 4" providing a 13-3/4" wide surface covering the Water Quality System mounted on the exterior of the front panel.

Two Underwater Lights

Two underwater lights can transform your Endless Pool into a beautifully lighted "waterscape." These low-energy lights are installed by drilling through the pool wall panel using a special tool provided. These holes are fitted with watertight niches that hold a long-life LED bulb. Like jets, lights cannot be retrofitted easily. If you decide on lights, they should be included in your initial order. Access must be maintained to the outside of the pool wall where lights are installed



Aluminum Coping

Our Aluminum Coping offers an easy and durable way to finish the top edge of your Endless Pool. The extruded aluminum interlocked panels are welded for maximum strength and include prefabricated corners and straight pieces pre-cut to fit your selected pool size. The coping is 1-3/8" thick and 8" wide and comes finished in a sand textured white, that can be painted any color you want. The snap strip can be removed and replaced with an inset of wood, tile, marble or any material you choose. Joints between the adjacent coping pieces are covered with an textured aluminum cover strip. Available with square or mitered corners.

Wood Receiver Coping

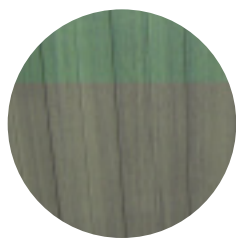
Knowing our customers like to use wood, we developed this extruded aluminum Wood Receiver System to accommodate standard 2" x 10" cedar, teak, mahogany or redwood provided by the homeowner. Finished with multiple coats of a suitable marine varnish, this coping system will fit any budget.

Bullnose Coping

Typically used when the pool is installed fully in-ground, the Bullnose Coping System allows the installer to finish with concrete and/or tile right up to the water's edge. The Bullnose Coping System acts as both a liner hanger and a finished edge. Supplied in pieces that can be cut to fit a specific pool size, these extrusions are fastened down to the top flange of the pool panels.

Synthetic Skirting

Backed with 3/4" of insulation, our synthetic skirting allows homeowners to finish the exposed walls of their aboveground pools. Pieces can be easily trimmed for partially in-ground pools. The maintenance free, synthetic skirting is available in a slate or mahogany color.



Slate



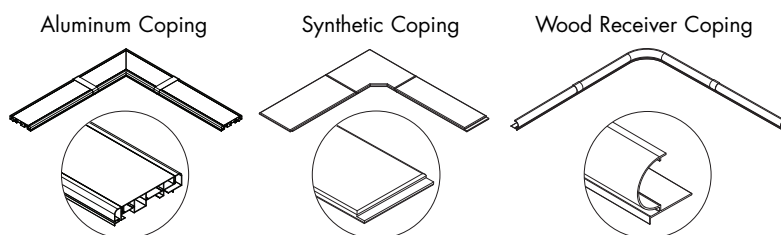
Mahogany

Four Hydrotherapy Jets

The hydrotherapy benefits of the Endless Pool swim current can be supplemented with the addition of four concentrated Hydrotherapy Jets. The optional jets are ideal for therapy and relaxation and are most commonly centered over the back bench of the pool. If you want jets they should be ordered with your pool as they are not easily retrofitted. Access must be maintained to the pool wall where jets are installed. The jet pump is generally installed at the front of the pool behind the skirting.



Bullnose Coping



Dual Propulsion System

For those who wish to swim side by side, this option incorporates a second propulsion system and a custom pool size. Our Dual Swim Current allows two swimmers to utilize two independently controlled variable speed swim currents.

Floor Mirror

Designed for serious swimmers, the Floor Mirror is ideal for swim technique improvement because it allows you to make adjustments to your stroke in real time. The 2' x 3' Floor Mirror attaches to the front of the current generator and rests on the bottom of the pool, and is ideal for tracking body roll and hand entry. A must for serious swimmers.





Swim Pace Display

Swim Pace Display

Easy to read — even with swim goggles — the 7" high visibility display presents the pace of the swimmer in minutes:seconds per 100 yards or 100 meters. Perfect for interval training or to monitor improvements in swim technique. Simply set the pace and swim for as long as you like.

Elite Endless Pool

For the highest caliber swimmers, our Endless Pool Elite offers the fastest, smoothest swim current available in any swimming machine. With two custom designed propellers operated by a single remote control, the Elite's :51 sec/100 yard pace challenges even the finest swimmers.

Underwater Swim Mirror

The Underwater Swim Mirror helps improve your stroke by providing instant feedback. The mirror is a must for serious swimmers. It lets you monitor each hand entry and pull-through, as well as shoulder rolls. You can also watch your underwater exhalation. The Swim Mirror is mounted on a convenient angle at the front of the pool and provides a unique view of your swim technique!

Underwater Running Pad

Designed for vertical exercise, the Running Pad allows you to walk, run or do other vertical exercises in your pool and avoids excessive wear and tear on your liner. Use the swim current for additional resistance, core strengthening and a total body workout.

Remote Pool Monitoring System

Remotely adjust your pool or swim spa from anywhere in the world! With the in.touch module installed, you can control water temperature, lights, and jets via your smartphone or tablet.



Elite Endless Pool



Underwater Swim Mirror

Waterproof Bluetooth Speaker

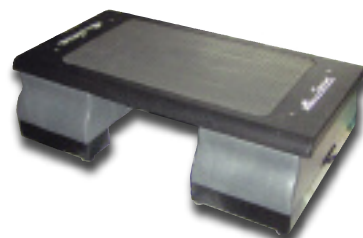
Our Waterproof Bluetooth Speaker is designed for use around water offering IPX7 waterproof protection against water immersion. Listen to your music while exercising on our aquatic treadmill or while relaxing in the Hydrotherapy Jets. Designed to float in the water, the speaker isn't intended for underwater use. For swimming we recommend you purchase the Finis SwiMP3 player.



Waterproof Bluetooth Speaker

Aquatic Exercise Step

Do step aerobics in your pool with this step made just for water exercise. Non-skid top and rubber-edged bottom provides excellent stability. It is the safest and most effective step available for water aerobics.



Aquatic Exercise Step

SwiMP3 Player

Listen to music while you swim! The SwiMP3 is revolutionary in that when the device is placed on any bones of the skull it leads to vibration of the fluid in the inner ear resulting in unprecedented sound quality. Bone conduction is a safe, well-established hearing mechanism that the SwiMP3 leverages to enhance aquatic activity.

Child Alarm

The Child Alarm floats on the surface of the pool and emits a loud warning sound should someone accidentally fall into the water. The alarm does not replace careful surveillance, but does offer an added measure of protection. When properly used, this alarm will warn you if a child, animal or adult falls into or enters your pool while it is unsupervised.

Includes an electronic solid state remote receiver. An alarm will sound both in your pool and in your house up to a distance of approximately 200 feet. The FCC-approved remote receiver has an on/off switch with an "on" indicator light and is powered by a 120 volt A.C. wall transformer. The Child Alarm meets the requirements of ASTM Standard F 2208

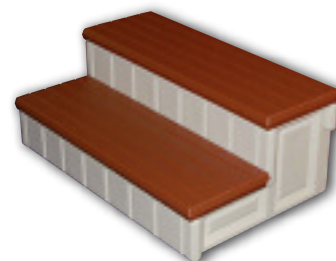


Exterior Stairs

We offer lightweight yet extremely durable stairs with two, three or four risers. The 2 tier steps are 36" wide and 23" deep with 7.5" risers. Capable of supporting up to 300 lbs. they are easy to assemble and give a finished look to any pool. Our 3 and 4 tier stairs offer integrated handrails to ease entry to, and exit from, your Endless Pool. These stairs are 36" wide with 8" risers and 12" treads. With a capacity of 400 pounds the stairs are attractive, durable and non-slip.



Child Alarm



Exterior Stairs



Aquatic Treadmills

Turn your Endless Pool into a complete home gym with the addition of an Aquatic Treadmill. Use the treadmill with the current on or off to vary the intensity of your walk or jog. Take it to the next step and use the aquatic treadmill to cross-train in the Endless Pool. Alternate between swimming and walking or jogging to get a full body workout!

Our new manual Aquatic Treadmill offers a wide belt for walking or running. You expend as much or as little effort as desired and still achieve a great cardio workout. The powered Aquatic Treadmill offers the same wide belt and is activated with a remote control, and is fully adjustable in speed from 0.6 to 4 mph.

Underwater treadmills are typically installed in pools with deeper panels. For placement options and additional information, please contact your design professional.



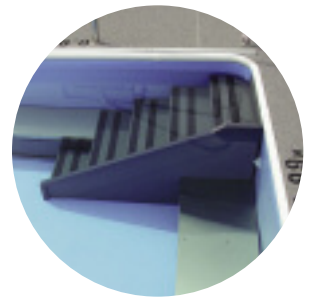
Corner Step

The Corner Step is often selected to make entry into and exit from the pool easier. It provides an intermediate step between the underwater channel and the coping. The step can be installed in any of the four corners of the pool. The step material will match your choice of return channels.

Interior Stairs

The Endless Pool Full Depth Stairs is designed for fully in-ground pool installations (42" panels only) and includes a stainless steel handrail for additional stability. The stair provides "walk-in" capability for those with special needs. The 2' wide stairs have slip resistant treads that extend from the top edge of the pool to the standard depth pool floor.

For pools with 48" and 54" panels we offer an interior entry stair that attaches to the rear of the pool and makes the transition from the top of the coping to the return channel. These stairs can be combined with a Raised Rear Bench that allows the swimmer to sit at the back of the pool and relax with our optional hydrotherapy jets.



Interior Stairs

Coping Rail

Designed with a smaller footprint, 3.5 inches by 3 inches, our Coping Rail is ideally suited for more narrow coping systems. Constructed from stainless steel the Coping Rail measures 12 inches high with a grab area measuring 12 inches by 16 inches. The Coping Rail provides added assistance and safety when entering or exiting your Endless Pool.

Spa Rail

The stainless steel Spa Rail provides assistance entering or exiting the pool while minimizing the projection into the swimming area. Rails are most helpful for fully or partially in-ground Endless Pool installations. The Spa Rail may be used with the Stainless Steel Corner Step, available separately. The Spa Rail is available in satin finish stainless steel.

Hand Rail

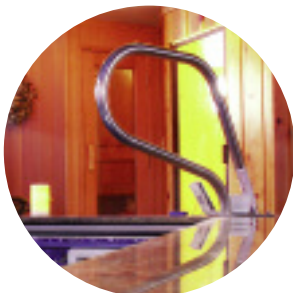
The Hand Rail provides greater stability by guiding the swimmer from deck/coping level to the pool floor of the standard pool. Rails are most helpful for fully in-ground Endless Pool installations. The Hand Rail, longer than the Spa Rail, is included with the Full Depth Stair.

3-Foot Stainless Steel Grab Bar

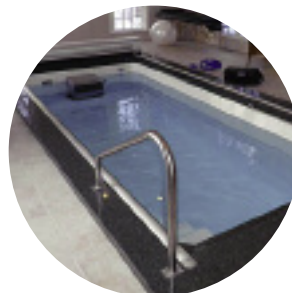
Grab Bars inside the perimeter of the Endless Pool provide an extra measure of security and are useful for a variety of exercise and therapy routines. The 3-Foot Stainless Steel Grab Bar is not recommended for installations with optional Bullnose Coping.



Coping Rail



Spa Rail



Hand Rail



3-Foot Grab Bar

Pool Liners

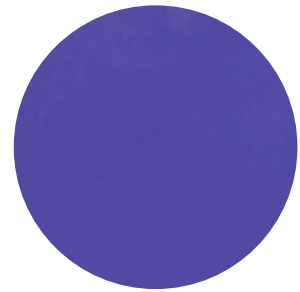
The interior of your Endless Pool can be finished in a variety of aquatic tones to suit your decor. Each liner comes with a 10-year warranty against manufacturer defects. In fact, we're so confident in our liners and how easy they are to install, that should one become damaged during installation, we'll REPLACE IT FREE OF CHARGE. With extra durability built right in, our custom liners give you the design flexibility and peace of mind not found in any other counter-current machine.

Our Standard Colors

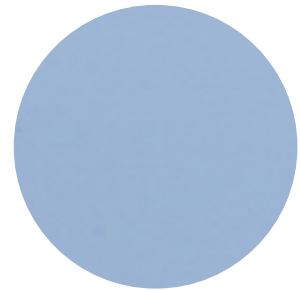
A choice of one of our three most popular liner colors, Dark Blue, Light Blue or Tye Dye, come standard with your Endless Pool.

New Tile Patterned Liners

Now you can finish your Endless Pool with our unique selection of high quality patterned liners, with or without tile edging.

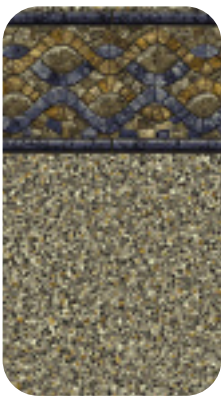


Dark Blue

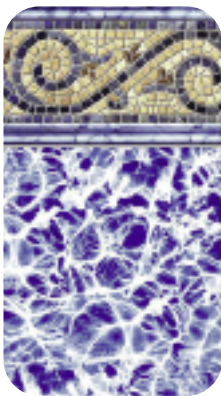


Light Blue

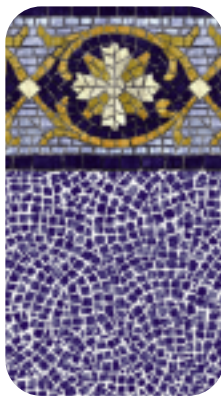
Santa Cruz



Siesta Wave Tan



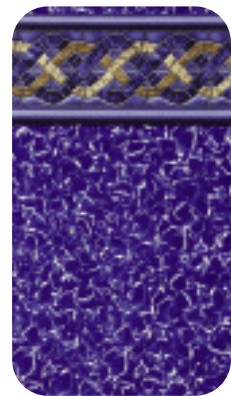
Lincoln Park



Grand Tile



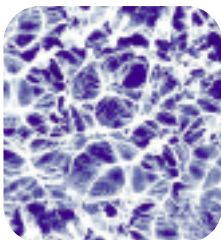
Cambridge



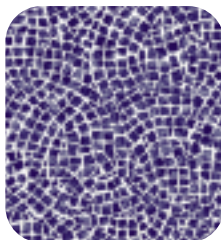
Sandstone



Diffusion



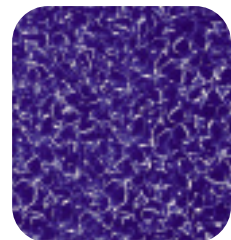
Lincoln



Pebblestone



Aquarius



NOTE: Liner seams may be more visible on patterns printed on white vinyl. Pattern and solid colors may vary slightly from brochure. Liner choices are subject to change without notice, please contact your Design Representative for all of the latest custom liner choices.